

**WORLD
GREEN
BUILDING
COUNCIL**

**#BUILDING
LIFE**

FROM ROADMAPS TO REGULATION

**Assessing national readiness for EPBD
whole life carbon implementation**



EXECUTIVE SUMMARY

Whole life carbon (WLC) policy is gaining momentum across Europe, driven by the 2024 revision of the Energy Performance of Buildings Directive (EPBD). However, national readiness to implement WLC requirements remains at different stages of maturity.

While EU policy has established a clear framework, delivery at national level is still in transition. Strengthening regulatory clarity, increasing ambition, and aligning policy with market capacity will be critical to move from commitments to measurable emissions reductions.

Alongside this, industry has played a leading role in advancing action to tackle WLC, demonstrating technical feasibility and building early momentum. However, progress remains concentrated among larger companies. Scaling impact will require broader engagement across small and medium-sized enterprises (SMEs) and the integration of voluntary action into policy and regulatory systems.

Significant barriers remain, particularly around data availability, administrative capacity, and political prioritisation. As a result, ambition is often constrained by what is currently feasible rather than what is required to meet long-term climate targets.

The next phase must focus on implementation: embedding WLC into regulation, finance, and procurement, while progressively introducing and tightening WLC targets and limit values.

Frontrunner countries and cities show that this transition is achievable. At national level, France has introduced mandatory energy and climate declarations with limit values under RE2020, covering residential, office, and school buildings.

At city level, in the Netherlands, Rotterdam and Amsterdam are embedding Paris Proof¹ requirements and/or EU Taxonomy principles into housing policy. These experiences provide practical models that can be scaled across Europe.

#BuildingLife has played a key role in raising awareness of WLC and will now focus on closing the implementation gap by strengthening data and capacity, aligning policy and market action, and scaling best practices across Europe.

¹ 'Paris-proof' refers to alignment with the objectives of the Paris Agreement, including limiting the increase in global average temperature to well below 2°C above pre-industrial levels and pursuing efforts to limit temperature increase to 1.5°C.

CONTEXT ACROSS EUROPE

Drawing on #BuildingLife programme data, the European policy and market landscape presents a complex environment for the implementation of life cycle Global Warming Potential (GWP) requirements, highlighting challenges that continue to influence progress across Member States.

Across the #BuildingLife countries, economic pressures, political shifts, and housing priorities are shaping the pace and ambition of WLC action in the built environment.

Several common trends can be observed. Economic constraints are limiting the capacity of industry to engage in sustainability initiatives, while broader political headwinds in many Member States are leading to basic level implementation of EU requirements, rather than advancing national ambition.

Simultaneously, housing affordability and supply pressures are increasingly prominent in policy agendas, amplifying perceived trade-offs between sustainability requirements and delivery objectives. Renovation subsidies are also being reduced, delayed, or made uncertain in several markets, while broader uncertainty around regulation and funding is beginning to slow investment and construction activity in some markets. At the same time, related EU policies such as the revised Construction Products Regulation (CPR), Circular Economy Act and EU Taxonomy requirements are helping to sustain momentum and create new entry points for action on WLC.

Progress is therefore inconsistent across the #BuildingLife countries. While some Member States and cities are advancing methodologies, roadmaps, and local life cycle GWP target and limit values, others remain at an earlier stage, focusing on data infrastructure, capacity building, and stakeholder alignment.

In this context, the EPBD represents a critical policy driver. By introducing requirements for life cycle GWP assessment and national roadmaps, it establishes a common framework for Member States, while allowing flexibility in national implementation.

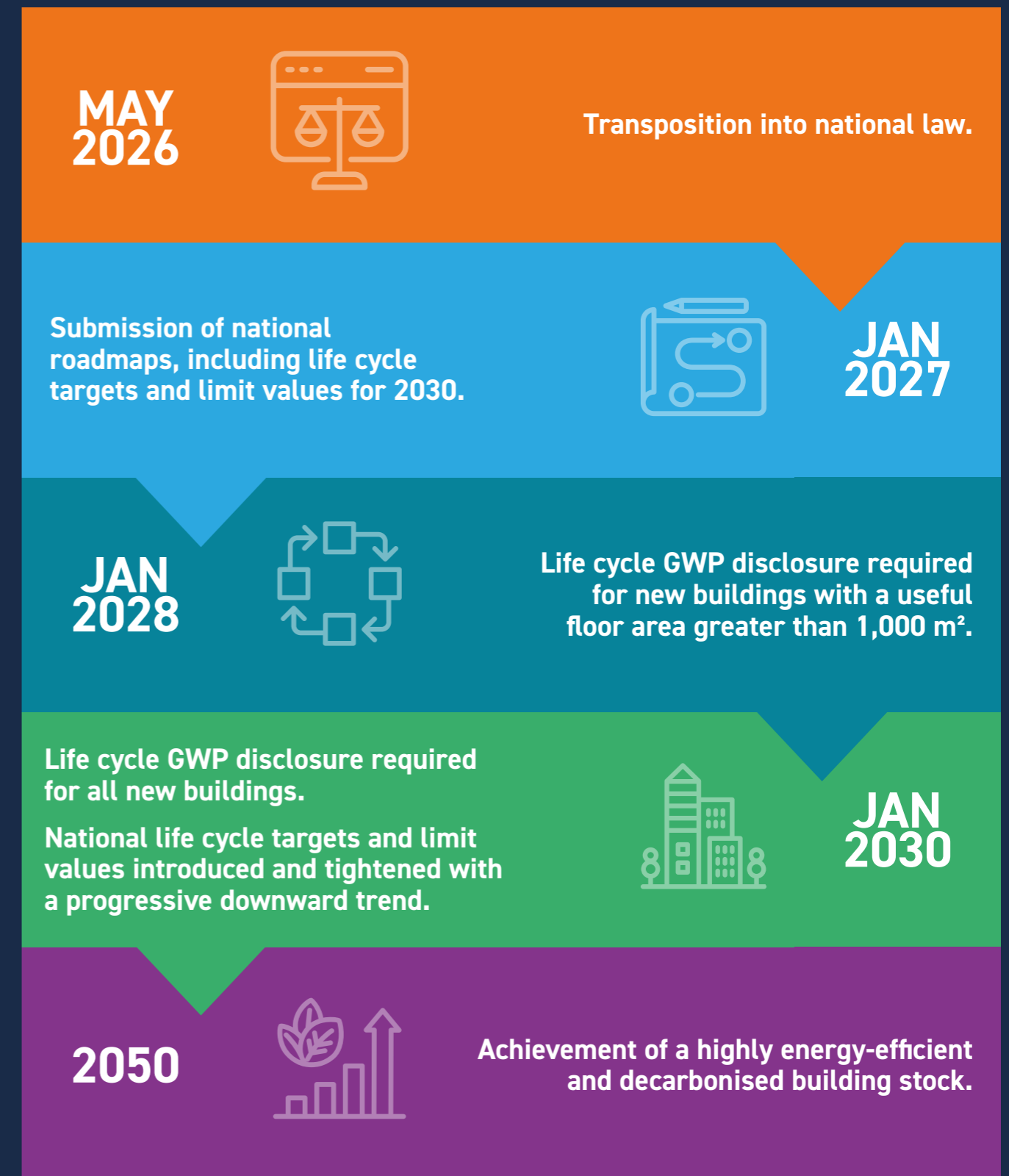
Upcoming life cycle GWP requirements

The 2024 revision of the EPBD introduces new requirements for Member States to address life cycle GWP within building policy frameworks, forming a key policy mechanism to reduce emissions from the built environment in line with the European Green Deal.

Key provisions include:



Key EPBD milestones for Member States



Understanding how Member States are positioned to respond to these requirements, in terms of policy development, market readiness, and implementation capacity, is therefore essential.

² EN 15978 is a widely used standard for assessing and disclosing the sustainability performance of buildings. It builds on the related EN 15804, which provides a methodology for product level assessment and disclosure.

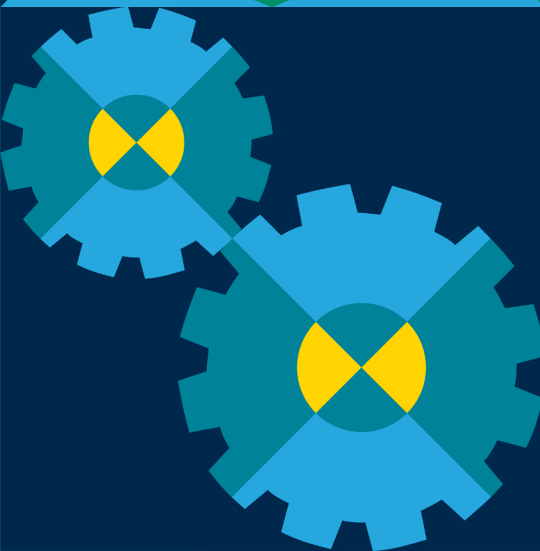

³ Level(s) is an EU developed framework designed to give a common language for assessing and reporting on the sustainability performance of buildings. It is closely aligned to and references EN15978.

#BUILDINGLIFE'S ROLE

#BuildingLife is a pioneering European initiative led by the World Green Building Council (WorldGBC), bringing together 16 national Green Building Councils (GBCs) to drive decarbonisation of the built environment across its entire life cycle: Bulgaria, Croatia, Czech Republic, Finland, France, Germany, Greece, Hungary, Ireland, Italy, the Netherlands, Poland, Serbia, Slovenia, Spain and the UK.

The initiative focuses on WLC to address the total impact of the built environment, covering both embodied emissions from material production, construction and end-of-life, and operational emissions from energy use during building operation. This directly supports the shift introduced by the EPBD towards life cycle GWP assessment.

Since 2021, #BuildingLife has played a key role in shaping policy and mobilising industry action across Europe. Now in its second phase, the initiative is focused on implementation, supporting countries to translate roadmap ambition into policy and practice, fostering collaboration between sectors.



In 2025, the #BuildingLife capacity building initiative supported an additional four GBCs (BG, EL, RS, SI) to assess national readiness and next steps for a WLC roadmap, applying the Zero Carbon and Climate Resilience Readiness Framework (Readiness Framework).

#BuildingLife 2021-2025 in numbers:

12
national WLC roadmaps

1 EU policy roadmap with
92,000
views

12
industry progress reports highlighting achievements and delays against national roadmap recommended actions

4 GBCs
assessing market readiness

42
national policies and voluntary standards influenced (including current recommendations)

190+
ambassadors supporting

Over €300 million

in additional EU, national government and/or industry funding leveraged for WLC research and innovation

This report presents findings based on 2025 #BuildingLife programme data, drawing on insights from 12 GBCs with roadmaps completed (HR, CZ, FI, FR, DE, HU, IE, IT, NL, PL, ES, UK), alongside additional input from five GBCs (AT, BE, EL, LU, SE) collected in early 2026 on life cycle GWP roadmaps reflected in the "Implementation Capacity" section.

#BuildingLife across Europe

12 European participants · 4 pre-roadmap phase countries.

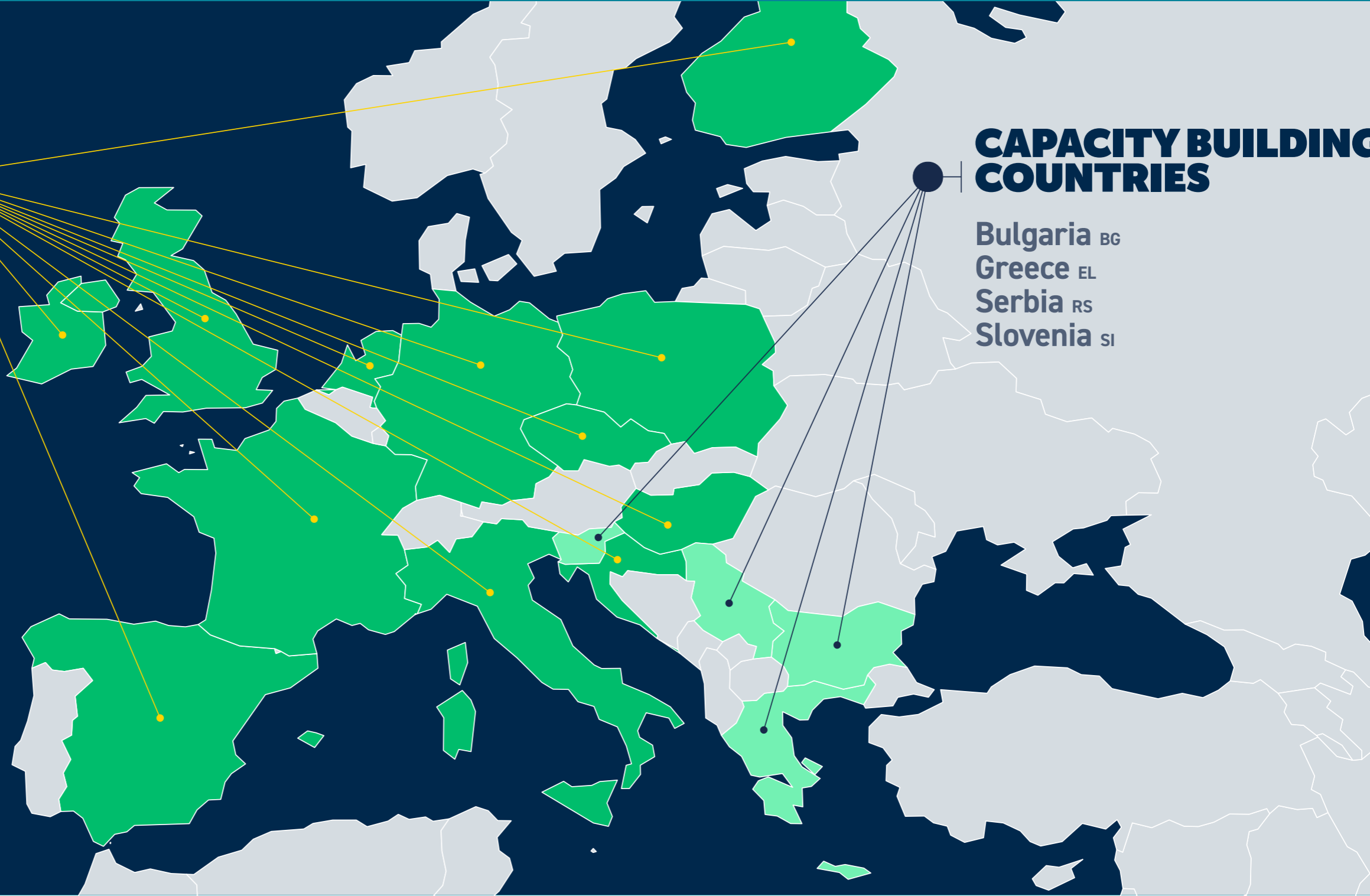
#BUILDINGLIFE COUNTRIES

- Croatia HR
- Czech Republic CZ
- Finland FI
- France FR
- Germany DE
- Hungary HU
- Ireland IE
- Italy IT
- Netherlands NL
- Poland PL
- Spain ES
- UK UK

CAPACITY BUILDING COUNTRIES

- Bulgaria BG
- Greece EL
- Serbia RS
- Slovenia SI

[WORLDGBC.ORG/
BUILDINGLIFE](http://WORLDGBC.ORG/BUILDINGLIFE)



POLICY READINESS

The 2024 revision of the EPBD marked a significant step forward in embedding whole life cycle thinking into European building policy, with #BuildingLife playing a key role in strengthening the evidence base and policy rationale that led to this change.

However, national responses remain uneven. While some Member States are moving beyond minimum requirements, others are focused on basic transposition, limiting the overall level of ambition and pace of policy development across the network.

Related to this, GBCs operate at varying levels of policy influence. In countries such as Hungary, Poland and Croatia, engagement remains at an early stage, focusing on awareness raising and capacity building. In contrast, Ireland and the UK demonstrate more structured involvement through consultations and parliamentary engagement.



In more advanced markets, life cycle GWP requirements are already entering regulation within broader WLC policy frameworks. France mandates GWP reporting for new buildings, Finland has introduced mandatory climate declarations with stricter limits planned, and Spain is progressing towards integrating GWP into national building codes.

Overall, the transition from advocacy to policymaking is underway, but the conditions enabling this shift remain uneven across the network.

Ambition of national life cycle GWP roadmaps

The ambition of national life cycle GWP roadmaps is partly reflected in progress towards the development and implementation of life cycle GWP targets within building regulations.

In line with the phased approach of the EPBD, many countries are currently prioritising methodologies, data infrastructure and disclosure frameworks, with fewer progressing to binding life cycle GWP targets, and those that have introduced target and limit values are often set at relatively low levels of ambition.

STATUS OF WLC TARGET SETTING IN NATIONAL BUILDING REGULATIONS

None Poland, Italy	2
In discussion Croatia, Czech Republic, Hungary, UK, Ireland	5
Under development Germany, Spain, Netherlands	3
In force France, Finland	2

Encouragingly, a large number of the Member States represented within the #BuildingLife countries have targets under development or in discussion, indicating a clear trajectory towards implementation. As technical capacity improves, there is a critical opportunity and necessity to strengthen ambition, particularly through the introduction and progressive tightening of life cycle GWP targets and limit values. These will be essential to move towards measurable emission reductions and alignment with long-term climate goals.

Best practice policy-advocacy examples:

CZECH REPUBLIC

CzGBC

Collaborating on joint advocacy with other stakeholders via the [Chance for Buildings Alliance](#), with growing engagement across ministries and active industry involvement, supporting EPBD implementation, renovation financing, sustainable finance, building data systems, and low-carbon material policy across multiple ministries.

FRANCE

ALLIANCE HQE-GBC

Supporting the implementation of the national environmental regulation for new buildings, RE2020, through ongoing government dialogue, management of [INIES](#), a mature national Environmental Product Declaration (EPD) database of nearly 6,500 EPDs, and input to policy consultations.

SPAIN

GBCe

Driving policy integration through structured advocacy, including targeted policy briefs, consultation engagement and direct input into regional planning frameworks such as [Madrid's Urban Code](#) and Catalonia's decarbonisation roadmap.

POLAND

PLGBC

Translating industry report outputs into endorsed policy recommendations via position papers, supporting government engagement on EPBD implementation.

UNITED KINGDOM

UKGBC

Embedding WLC in national policymaking through participation in the [Warm Homes Plan](#) Expert Panel, alongside sustained ministerial engagement and consultation input.

Case study

Sub-national leadership as a policy driver

In several countries, cities and regions are advancing WLC requirements ahead of national policy, demonstrating how local action can accelerate implementation.

FINLAND

Helsinki & Turku have introduced WLC limit values for new residential buildings, with further municipalities preparing similar requirements in 2025.

NETHERLANDS

Rotterdam has embedded both DGBC's [Paris Proof scheme](#) and [EU Taxonomy](#) considerations into housing policy. Amsterdam focuses on Paris Proof standards.

ITALY

Milan is developing WLC guidelines and benchmarks linked to local planning regulation.

SPAIN

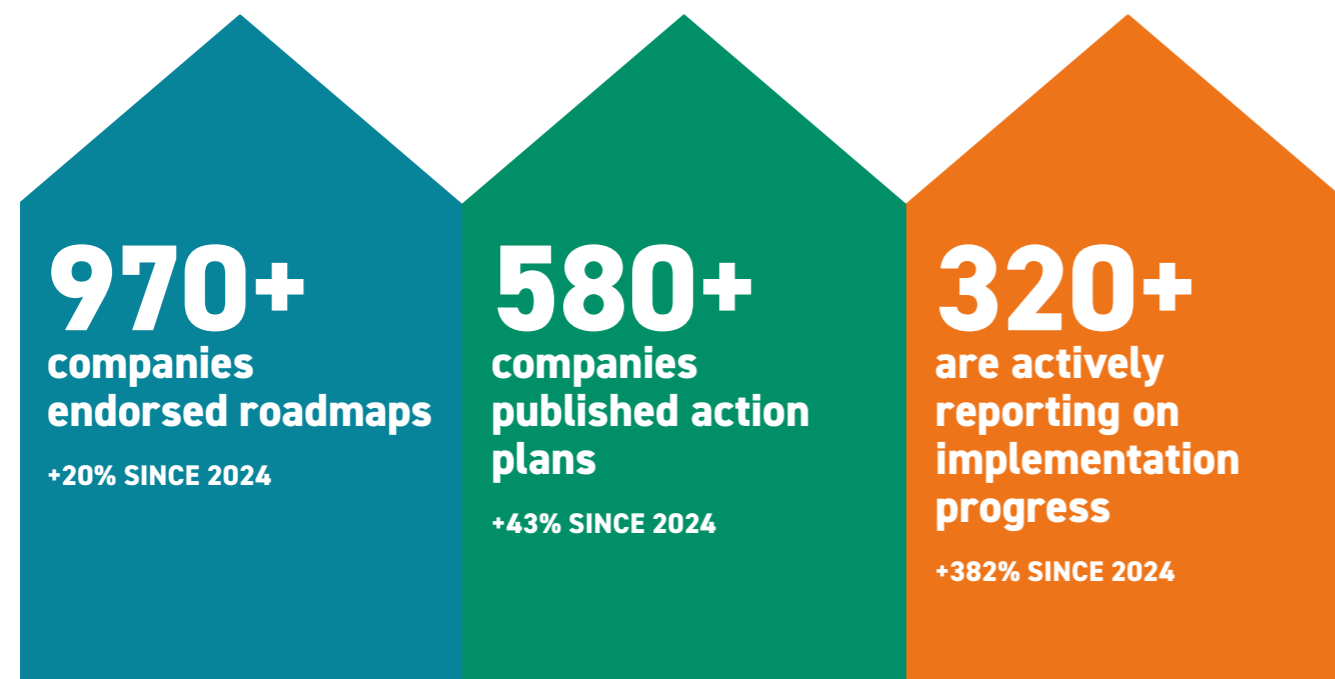
Regional and city-level processes are supporting the integration of WLC into planning frameworks.

This sub-national momentum provides a valuable testing ground for implementation and highlights an important opportunity for #BuildingLife. Where national progress is slower, cities can play a leading role in demonstrating feasibility and building the case for wider adoption, especially when collaborating with industry.

MARKET READINESS AND INDUSTRY MOBILISATION

In the absence of comprehensive regulation, industry is playing a leading role in advancing WLC. Across the #BuildingLife countries, voluntary action has driven early progress on WLC, building the knowledge base, tools, and commitments that underpin future regulation.

#BuildingLife successfully mobilised industry at scale in 2025:



Importantly, the significant increase in companies reporting on implementation progress reflects a shift from high-level commitments to measurable action, strengthening accountability, transparency and enabling real progress to be tracked.

In several markets, companies are already measuring and disclosing WLC without regulatory requirements, normalising practices and building market readiness for future mandatory requirements. For example, in Germany, a mature reporting ecosystem is emerging, with over 2,700 commercial and 380 residential projects disclosing WLC through DGNB-related frameworks and market activities. This provides a strong evidence base to support future ambitious policy development.

However, engagement is largely concentrated among larger organisations, while SMEs continue to face capacity and resource constraints. At the same time, EU-level Environmental, Social and Governance (ESG) regulatory uncertainty is beginning to weaken compliance-driven motivation, reinforcing the need to strengthen the business case for tackling WLC.

Mobilisation and capacity building

The [#BuildingLife Summit](#), 3 June 2025, convened stakeholders from across policy, industry, and finance, highlighting the need to move from commitments to implementation through stronger collaboration and alignment with national strategies and investment frameworks.

Across the programme, over 350 events between 2021 and 2025 have showcased national WLC roadmaps, supporting knowledge sharing, while the capacity building initiative has engaged 200+ stakeholders, helping to identify priorities and enabling actions to address WLC.

Best practice industry engagement examples:

GBC CROATIA

Translating engagement into action through one-page company summaries for 28 organisations, capturing specific decarbonisation measures companies are implementing in practice, emissions tracking, and progress on EPDs, moving beyond awareness towards accountability.

DGNB (GERMANY)

Strengthening the evidence base through studies showing that certified renovation has lower climate impacts than new builds, and that there is no clear link between life cycle assessment (LCA) results and increased construction costs.

HuGBC (HUNGARY)

Developing sector-specific ESG and decarbonisation guidance across 19 roadmap segments through a working group, supporting companies to take first steps on WLC, carbon measurement, and supply chain data.

IGBC (IRELAND)

Establishing a cross-disciplinary Community of Practice, 'Carbon in the Built Environment', with over 300 participants, creating a structured platform for knowledge sharing and alignment on the measurement and reduction of life cycle emissions.

GBC ITALIA

Linking WLC to financial decision-making through an EU Taxonomy verification service, enabling real estate assets to demonstrate compliance of properties by referring to the detailed methodology developed by Politecnico di Torino (POLITO) through #BuildingLife for the calculation of WLC emissions (in Italy there is not an established national methodology).

DGBC (NETHERLANDS)

Advancing implementation through a national Net Zero Carbon Buildings Standard which is aligning operational and embodied carbon targets with the Pairs Agreement, leadership on WLC renovation methodology, and support for an investor coalition setting the first hard embodied carbon limits for new construction.

Case study

Industry progress reports as a mobilisation and accountability tool

Across the #BuildingLife countries, all GBCs have produced national industry reports between 2024 and 2025, assessing and tracking progress since the launch of national roadmaps.

These reports translate high-level ambitions into practical insights, evaluating industry performance, identifying barriers, and outlining priority actions for next steps. In several countries, they also include policy recommendations, strengthening the link between industry experience and regulatory development.

Overall, industry reports support accountability and action, moving beyond awareness-raising. By consolidating company-level insights, case studies and highlighting real-world challenges, they help align industry actors, inform policy discussions, and guide the next phase of implementation.



IMPLEMENTATION CAPACITY

As Member States move from policy development and market mobilisation towards delivery, implementing life cycle GWP requirements in practice remains a key challenge.

Current state of implementation readiness

Survey responses* indicate that many countries are still building the technical, institutional, and political capacity required for effective implementation. As a result, current ambition often reflects what is feasible to deliver in the short term, rather than what is required to meet long-term climate targets.

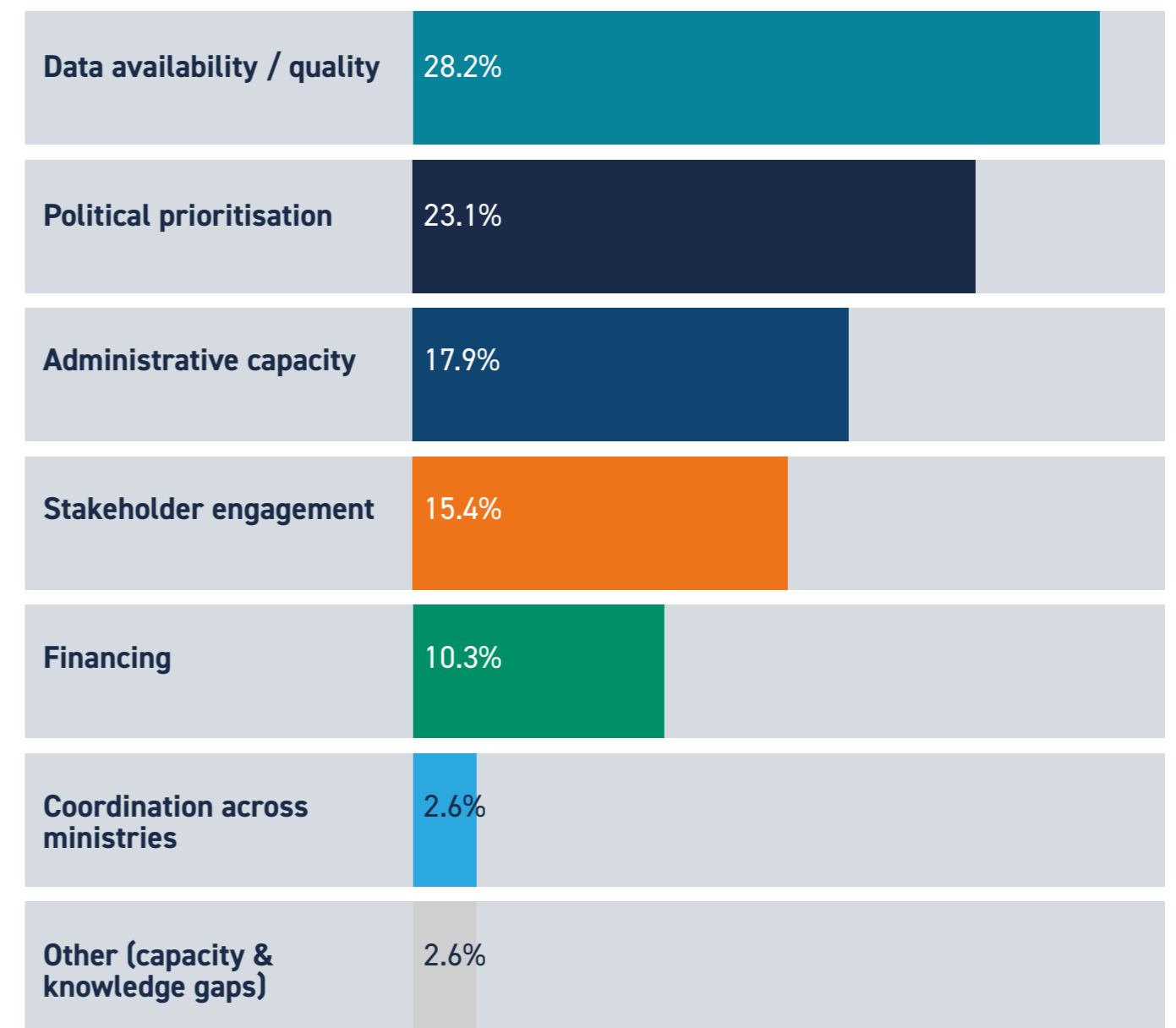
Implementation readiness varies significantly across the network. While some frontrunners are already applying life cycle GWP calculations in practice, others are still preparing for implementation.

This indicates that many national frameworks are still in a foundation-building phase, where the priority is establishing workable systems before scaling ambition.

Key barriers to life cycle GWP implementation

The most commonly identified barriers highlight both technical and structural challenges.

Relative weighting based on GBC survey responses.



Source: *Responses from 12 #BuildingLife GBCs (HR, CZ, EL, FI, FR, DE, HU, IE, IT, NL, PL, ES) with additional inputs from BE, AT, LU, SE in January 2026. UK excluded (non-EU, not EPBD-bound).

Data availability, quality and methodological challenges

A lack of reliable and harmonised data is the most frequently noted barrier. In many countries, national EPD databases remain limited or incomplete, requiring reliance on international datasets that may not reflect local conditions. This limits the ability to develop robust life cycle GWP calculations and meaningful target and limit values.

Data availability also varies significantly across the network. In Hungary, the absence of a national LCA or EPD database and methodology has led to the establishment of a dedicated LCA working group. In the Czech Republic, the use of EPD data is gradually increasing in line with EU policy developments. However, a unified national digital platform is not yet in place, and the integration of life cycle data into project documentation remains at an early stage. In the Netherlands, the transition to updated European standards is creating additional methodological complexity for national databases.

Even where data exists, access can be constrained by commercial sensitivity or governance restrictions, further limiting its use, as noted in Poland, Spain and Croatia. Countries such as France and Germany benefit from more mature national EPD databases; although data within these systems remains subject to defined methodological and verification requirements.

Case study

INDICATE – strengthening data, methodologies, and benchmarking

Research and innovation projects are playing a critical role in addressing data and methodological gaps that currently limit the implementation of WLC policy. The INDICATE project provides a strong example of how targeted support can strengthen national readiness.

Across eight participating Member States, INDICATE has/is supporting the development of more robust LCA methodologies, improving data quality and availability, and establishing national benchmarks for WLC calculations.

A key added value is its role in enabling benchmarking across countries, allowing comparison of methodologies, data, and results, and supporting greater consistency in approaches. Collaboration with academia is also essential in strengthening technical credibility and advancing data development.

Overall, INDICATE demonstrates how coordinated research and cross-country collaboration can accelerate the transition towards more harmonised and policy-ready systems for WLC assessment.

Administrative capacity within public authorities

Limited technical expertise within public authorities remains a key barrier. As WLC regulation is relatively new, many ministries and regulators are still developing the capacity to assess methodologies and enforce requirements.

Continued investment in training and knowledge exchange will be essential. To date, over 180 public authorities have received training in building life cycle assessment across the #BuildingLife countries, providing an important foundation for scaling implementation.

Political prioritisation and stakeholder resistance

Political prioritisation remains a key challenge, with measures to address WLC often competing against housing affordability and delivery pressures. Governments may be reluctant to introduce requirements perceived as increasing costs or complexity, resulting in lower initial ambition.

In response, GBCs are adapting their engagement strategies to align life cycle GWP with broader national priorities, including affordability, competitiveness, and circular economy objectives. This includes demonstrating how life cycle approaches can support housing quality, long-term value, and energy security.

However, resistance persists across parts of the construction sector, where life cycle carbon is still perceived as a risk to cost and delivery timelines. Without clear and consistent narratives and training programmes demonstrating its wider value, there remains a risk that life cycle GWP is positioned as a constraint rather than an enabler of policy objectives.

Case study

Finland- from implementation to increasing ambition

Finland demonstrates that WLC regulation can be successfully implemented when supported by strong data infrastructure, a national methodology, and industry readiness. The national Climate Declaration entered into force in 2026, making WLC assessment mandatory for new buildings, supported by a national database.

Initial limit values were intentionally set at a relatively low level of ambition to enable market adaptation, with only a minority of projects requiring design changes. However, a second phase of significantly stricter limits has already been confirmed for 2029, establishing a clear trajectory towards meaningful emissions reductions.

Green Building Council Finland (FIGBC) played a key role in strengthening this trajectory. Through targeted policy engagement and the use of market survey evidence, it demonstrated industry readiness for stricter requirements. This evidence directly informed ministerial discussions and contributed to securing more ambitious 2029 limit values.

This phased approach illustrates an effective pathway, establishing implementation capacity first, while embedding a clear mechanism to progressively increase ambition, supported by market evidence.

PILLARS FOR SUCCESSFUL IMPLEMENTATION

To move from ambition to delivery, action is required across four key areas.

STRENGTHENING FOUNDATIONS

Build the technical basis

Data infrastructure and methodologies: Develop national EPD databases aligned with local practices and energy mixes.

Administrative capacity: Equip public authorities with training, guidance, and standardised methodologies.

CLARIFYING POLICY FRAMEWORKS

Provide direction and long-term certainty

Policy pathways: Clearly define the transition from reporting to binding limits within roadmaps, enabling long term planning.

GWP limit values: Introduce and progressively tighten ambitious thresholds with clear timelines.



ENABLING MARKET UPTAKE

Make low-carbon solutions viable

Financial incentives: Align procurement, EU taxonomy, and fiscal measures to strengthen the WLC business case.

SME support: Improve smaller actors' capacity via practical tools, streamlined guidance and accessible training.

SCALING SYSTEM-WIDE TRANSFORMATION

Drive impact across the sector

Leverage renovation: Prioritise existing buildings to reduce emissions and support housing demand.

Collaboration: Scale best practices and cross-country learning through platforms such as the National Building Policy Working Group, connecting national governments, the European Commission, and GBCs.

Delivering life cycle GWP implementation

Delivering life cycle GWP implementation under the EPBD will require coordinated action across policy, industry, and finance, with 2027 marking a critical milestone for national roadmap delivery, followed by implementation through 2028 and 2030 disclosure requirements. Strengthening data, capacity, regulatory clarity, and aligning financial incentives will be essential to translate ambition into measurable impact.

Through its consortium of 16 GBCs, #BuildingLife will continue to enable collaboration, connecting stakeholders, sharing best practices, and scaling implementation across diverse markets.

Sustained collaboration across countries and sectors will be key to ensuring that life cycle GWP moves from policy ambition to consistent delivery, supporting a decarbonised European building stock by 2050.

GET INVOLVED!

There are several ways to engage with and support the next phase of #BuildingLife:

Explore the [#BuildingLife programme and roadmaps](#)

Connect with your [local GBC](#) to engage with national WLC initiatives and implementation activities

Become a [#BuildingLife Ambassador](#) and help drive industry action and knowledge sharing by contacting your national GBC

Participate in [#BuildingLife events and GBC webinars](#) to stay informed and collaborate with peers

Support the integration of WLC approaches within your organisation, projects and policy processes

Follow [WorldGBC](#) and participating GBCs for updates, resources and opportunities to engage

LEARN MORE AT www.worldgbc.org/buildinglife

Resources

[EU #BuildingLife Roadmap](#)

[EU Policy Whole Life Carbon Roadmap](#)

[National #BuildingLife Roadmaps](#)

[Croatia: Roadmap for decarbonization of buildings in Republic of Croatia](#)

[Czech Republic: Zero Carbon Roadmap: Pathway to Climate-Neutral Buildings in the Czech Republic](#)

[Finland: BuildingLife Programme for Carbon Neutrality in the Built Environment](#)

[France: Roadmap: A pathway to decarbonization \(2050\)](#)

Germany:

- [Guide to Climate-Positive Buildings: Set goals, identify tasks, and take effective action with the right measures \(Part 1\)](#)
- [Our Joint Measures Overview \(Part 2\)](#)

[Hungary: Zero carbon roadmap 2050 Hungary](#)

[Ireland: Building a Zero Carbon Ireland: A roadmap to decarbonise Ireland's built environment across its whole life cycle](#)

[Italy: Decarbonizing the built environment's life cycle: Italian roadmap to achieve 2050 climate goals.](#)

[Netherlands: Whole life carbon: On the way to a CO₂ neutral construction industry](#)

[Poland: Estimating the Carbon Footprint of Buildings: Whole Life Carbon Roadmap for Poland 2050](#)

[Spain: Whole Life Carbon Roadmap for a decarbonised built environment in Spain](#)

[UK: Net Zero Whole Life Carbon Roadmap: A Pathway to Net Zero for the UK Built Environment](#)

[National industry reports](#)

[Croatia: Industry report- Decarbonization of the Croatian construction industry](#)

[Czech Republic: Zero Carbon Roadmap 2.0: Overview of Status and Progress](#)

[Finland: Finnish Industry Report. Sustainability Audit](#)

[France: Progress on the French Industry Report](#)

[Germany: Study on Climate Action](#)

[Hungary: Zero carbon roadmap 2025: Industry report 2025](#)

[Ireland: Building a Zero Carbon Ireland: Industry Insights and Actions](#)

[Italy: Forum Notebook](#)

[Netherlands: #BuildingLife Industry Report](#)

[Poland: The Carbon Footprint of Buildings Under Scrutiny: from Diagnosis to Action](#)

Spain:

- [Country Reports: Country Report 2024, Country Report 2025](#)
- [Taking steps on Decarbonization: Report on the Strategic Framework of the Frontrunners Companies. Press note summary.](#)

UK:

[Zero Whole Life Carbon Roadmap Progress Report A Pathway to Net Zero for the UK Built Environment](#)

Policy scorecards:

- [100 Days into Government](#)
- [Government Policy Scorecard](#)

[Industry "Pulse Check" on Roadmap Key Priority Actions](#)

[#BuildingLife capacity building reports](#)

[Bulgaria: Building life – capacity building](#)

[Greece: Capacity building move](#)

[Serbia: Drawing a road map for the decarbonization of the construction sector](#)

[Slovenia: Building Life Capacity Building taken in Denmark, France, Sweden and London](#)

[#BuildingLife capacity Information sheets](#)

[Life cycle Global Warming Potential in the Energy Performance of Buildings Directive](#)

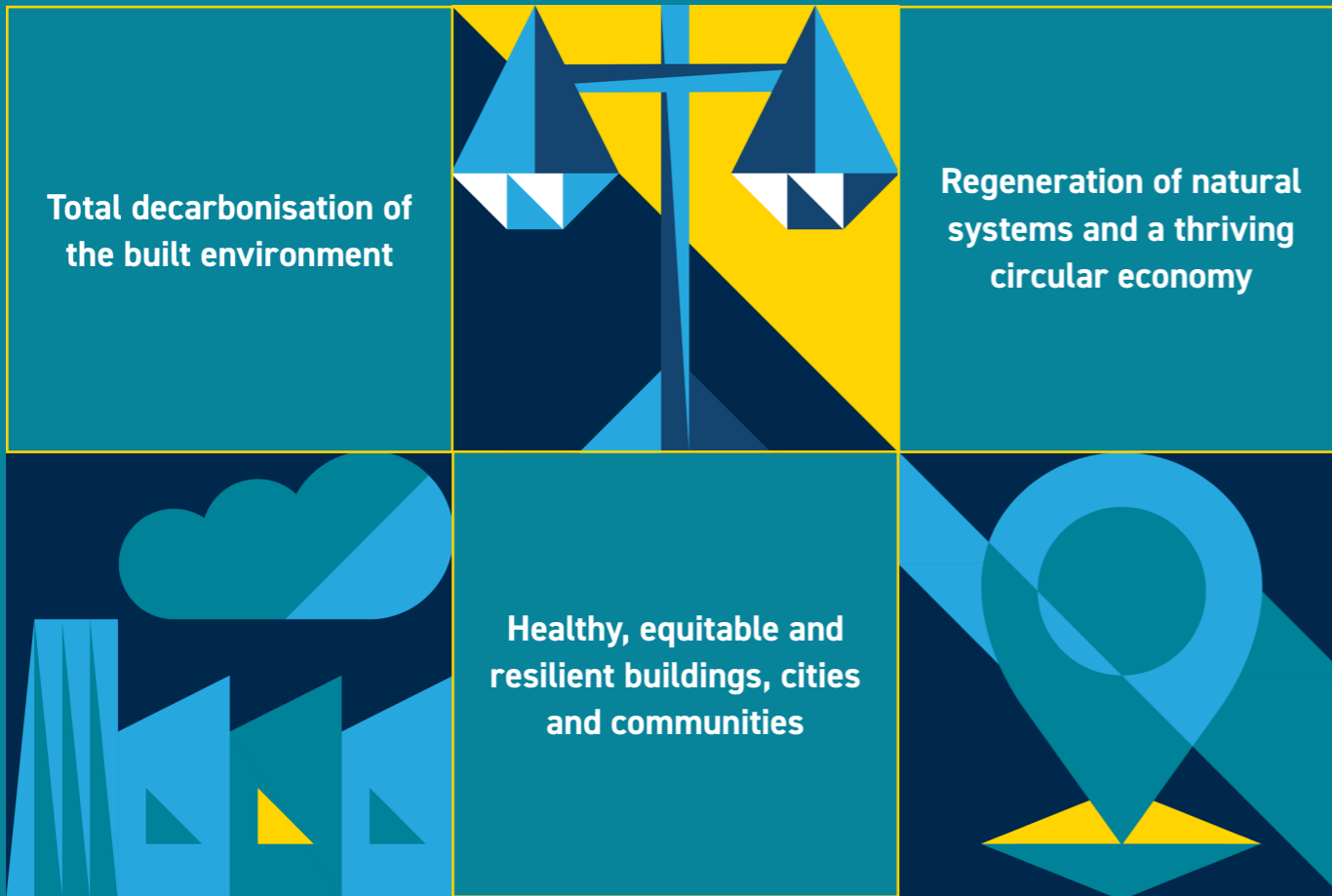
[Minimum Energy Performance Standards and renovation trajectories in the Energy Performance of Buildings Directive](#)

[How life cycle GWP measures are being implemented by governments- Measures taken in Denmark, France, Sweden and London](#)

About the World Green Building Council

The World Green Building Council (WorldGBC) is the largest local-regional-global action network leading the transformation to sustainable and decarbonised built environments.

Together, with over 85 Green Building Councils and industry partners from all around the world, we are driving systemic changes to achieve:



We work with businesses, organisations and governments to deliver on the ambitions of the Paris Agreement and UN Global Goals for Sustainable Development (SDGs).



#BUILDING LIFE

SUPPORTED BY



IKEA Foundation

Laudes ———
—— Foundation